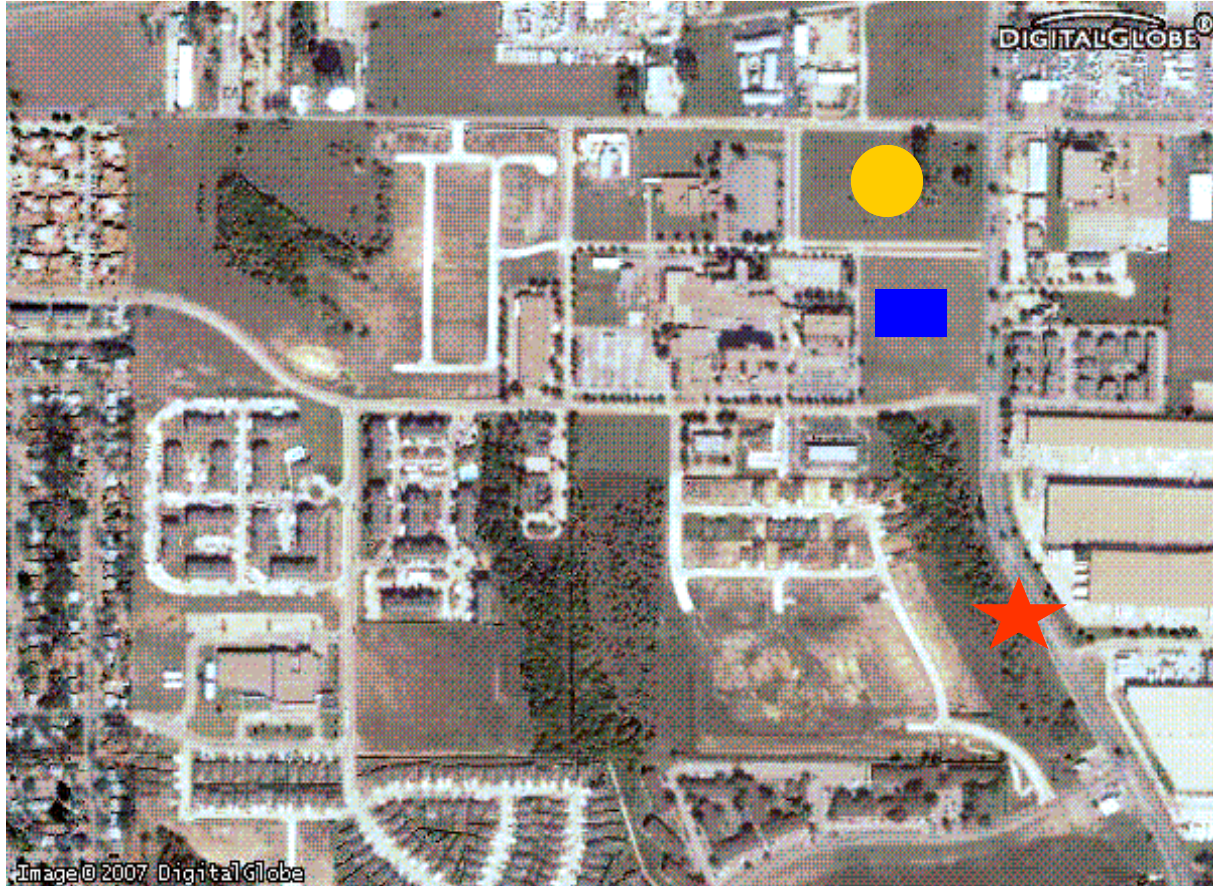


LAND IN GRAND PRAIRIE AVAILABLE FOR SALE OR BUILD TO SUIT



★	7509 Great Southwest Parkway	10.118 Acres	\$5.00 PSF
●	2600 Hospital Boulevard	7.046 Acres	\$7.00 PSF
■	850 S Great Southwest Parkway	2.40 Acres	\$6.00 PSF

AT A GLANCE

Zoning

Commercial/LI

Traffic Counts

Great Southwest 15,570

Demographics

	1 Mile	3 Mile	5 Mile
Population	11,886	105,087	297,269
Med HH Income	\$36,556	\$47,107	454,637
Median Age	28.2	31.3	31.7

(Based on 2006 estimates)

CONTACT INFORMATION

Crystal Brown
972-458-2588 Ext 116
crystal@wellsasset.com

Mike Wells
972-458-2588 Ext : 104
mike@wellsasset.com

www.wellsasset.com